



The Millwright™
a naturaLED® brand

**THE
WORKHORSE
LED LIGHT
FIXTURE FOR
DIRTY,
HIGH HEAT
ENVIRONMENTS
LIKE THIS ONE.**



Steel Mill Tough LED Lighting

The perfect solution for any industrial application.

NaturaLED® is home to high performance LED lighting. At naturaLED® we design, engineer and build lighting technology from concept to market launch.

The manufacturing technology and product development team have collaborated to build a comprehensive line of industrial LED lighting solutions ideal for harsh environments.

The MillWright™ sets a new standard of excellence for industrial light fixtures. This industrial round high bay is engineered with an innovative design that combines the best features of high quality LED lighting into a high-performance fixture that endures hazardous settings that experience dust, water and sizeable vibrations. There is nothing else like it on the market.



Manufactured exclusively by
naturaLED

DESIGNED TO WORK AS HARD AS YOU DO.

Safety chains included

Lightweight at less than 25 lbs. Only 13 lbs when driver is mounted remotely

Input line voltage:
277-480V
120-277V
250Vdc

Remote Driver Kit operates up to 100 ft

Thermal Design withstands ambient temperatures from -40° to 70° C (158°F) at full lumen output

Self-cleaning, designed housing doesn't trap dirt and dust, keeping fixture clean and cool

Durable made of ADC12 die-cast aluminum housing with corrosion-resistant powder coat finish



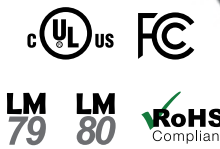
The superior performance of The MillWright industrial round high bay can be attributed to its numerous features and benefits. This DLC premium qualified fixture is IP66 rated to withstand dirt and dampness without failing or decreasing lumen output. It has an L70 rated chip to last over 100,000 hours. The MillWright can support the type of power required in heavy industry with multiple input line voltages available; 120-277V, 277-480V, and 250DC for a crane mount. The fixture comes standard with 10KV surge protection.



Manufactured exclusively by
naturaLED

BUILT TO SURVIVE

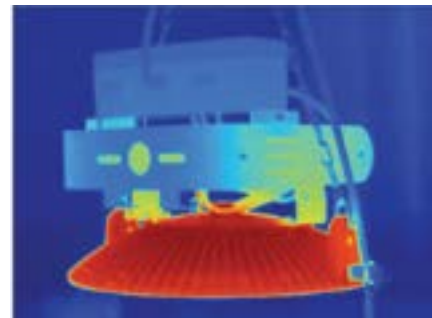
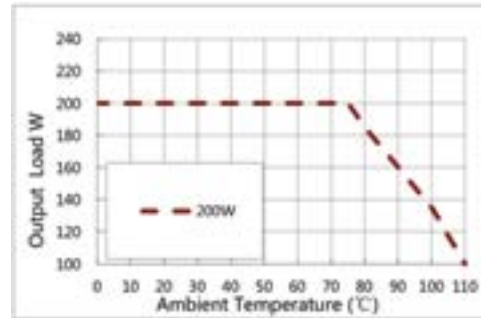
Rated UL1598 and IP66 rated, The MillWright meets the standards for safety to operate in a location in which high pressure water or other liquids can splash, drip or flow against the equipment.



The MillWright operates in extreme temperatures between -40° and 70° C (158°). Unlike other LEDs that start to depreciate around 50° C (129°), The MillWright maintains full lumen output at 70° C. The heat sink is optimized to reduce fixture weight.



Premium outdoor rated lens
ADC12 die-cast aluminum
Finish: Black, 200W or 340W



Even Heat Dissipation



RETURN ON INVESTMENT

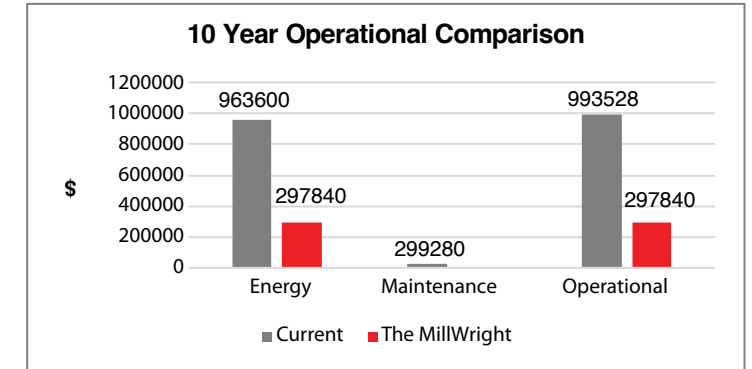
Reduce Costs. Improve Employee Safety. Save Energy.

Achieve these goals by swapping from inefficient lighting to The MillWright™.

Manufacturing facilities pay huge energy bills so it makes sense to swap to lighting solutions that can lower costs. But it's not just the lighting itself that impacts the facility. Changing a light that hangs 100 ft. from the ceiling in a steel mill halts productivity, adds maintenance costs, and increases risk to employees.

This Operational Comparison chart shows how The MillWright™ produces a 70% savings in both energy and operational costs over the course of 10 years with a 100 fixture installation. This totals \$695,688 in savings.

- Energy cost = \$0.1000/kWh
- Annual energy cost escalation = 0.00%
- Energy costs are averaged over 10 year analysis period
- Maintenance costs are averaged over 10 year analysis period



The average lifespan of most HID or poorly engineered LEDs in these hot and dusty environments is often shorter than expected. Luckily, The MillWright™ provides a fast return on investment by enduring harsh climates and outlasting other lighting technology with its superior design.

EMPLOYEE SAFETY

Brighter lighting is essential to improving working conditions in locations where loud machinery, vibrations, high ceilings, dust and debris can compromise employee safety.

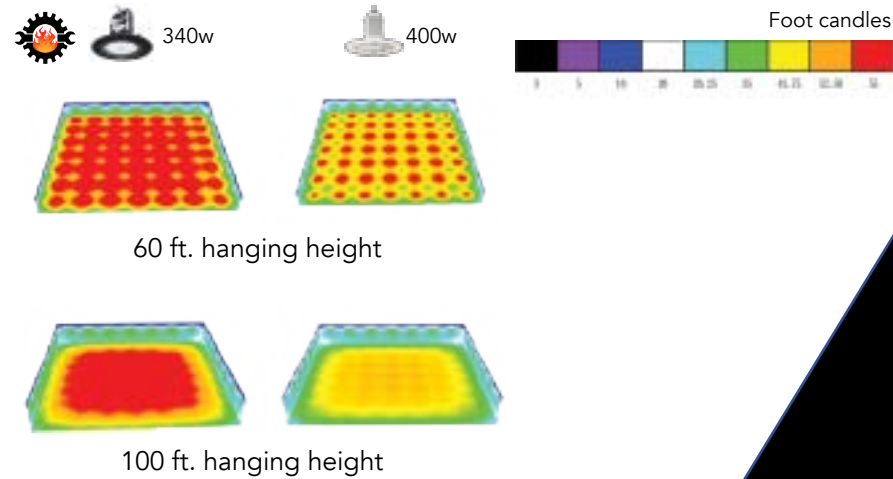
- Improve visual acuity
- Reduce risk of employee injury
- Lower maintenance costs
- Lifespan 100,000 hours



BEATING THE COMPETITION

The MillWright™ vs. the competition

The MillWright™ sets itself apart from other LEDs when it comes to light output. Hanging at 100 ft., 49 fixtures create broad, uniform light distribution that achieves over 55 foot candles on the ground - 25% brighter than the competition.



Narrow or Medium Angle
Beam Pattern: 80° and 110°

110 ft.
100 ft.
90 ft.
80 ft.
70 ft.



The MillWright™ installed in a steel mill at 110 feet.



Manufactured exclusively by
naturalLED

NEW & IMPROVED



We listened to feedback from customers and made a few changes to improve ease of installation, efficacy, efficiency, output and durability.

| IMPROVEMENTS | NEW VERSION | PREVIOUS VERSION |
|--------------|--------------------------------------|---------------------------|
| SIZE | 15.75" diameter | 23" diameter |
| WEIGHT | 24 lbs. (13 lbs. with remote driver) | 36 lbs. |
| EFFICACY | Up to 175 LM/W | Up to 150 LM/W |
| LUMENS | 340 watts = 57,000 Lumens | 400 watts = 54,000 Lumens |
| DRIVER | Mount up to 100 ft. | Mount up to 30 ft. |
| REFLECTOR | Narrow 80° beam spread | No reflector |

ACCESSORIES

The MillWright comes with several accessories so you can customize the fixture to suit your needs.



Surge protection is critical for avoiding failures due to "dirty power". The MillWright offers additional 20KV surge protection for both 120-277V or 347-480V.



Manufactured exclusively by
naturaLED

ADDITIONAL LIGHTING SOLUTIONS

AREA LIGHTING



In addition, naturaLED designs and manufactures LED lighting solutions from area lights and high bays to vapor tights and wall packs. We have options to cover almost any lighting project.

INDOOR LIGHTING



SECURITY LIGHTING



Manufactured exclusively by
naturaLED

natural[®]led

Turning Lights into Savings

California, USA

2000 S. Grove Ave, Bldg B, Ontario, CA 91761
855-758-7009 | 909-930-6868

Texas, USA

1940 Diplomat Drive, Farmers Branch, TX 75234

North Carolina, USA

2511 Reliance Ave, Apex, NC 27539

Canada

Unit 206 - 9710 187th Street Surrey, BC V4N 3N6